



Future Forest

C O M P A N Y

2025

ANNUAL IMPACT REPORT

Contents

- CEO Introduction
- Woodland highlights
- Nature highlights
- Partners highlights
- Carbon highlights
- Trees Not Tees
- Woolly Pig Company
- Community spotlight
- Looking ahead to 2026



2025 at The Future Forest Company

2025 has been a year of transformation for The Future Forest Company. With the majority of our existing sites now planted, established, and progressing steadily through the various codes, we've successfully shifted from a purely operational focus into a more commercially led, product-driven phase of our journey.

Our restoration work has always placed biodiversity and habitat creation at its core, but this year we've taken a major step forward: evolving our land into a full-circle ecosystem, where every natural asset, from habitats to species recovery, strengthens and adds long-term resilience to our growing carbon portfolio. In doing so, we've begun to define what the "plus" in carbon should mean: richer environmental outcomes, deeper data, and more meaningful ways for people and businesses to take part.

Alongside our ecological progress, 2025 has also been a year of meaningful growth within our team and wider community. We've expanded our capabilities, built new partnerships with

regenerative practitioners, and worked more closely than ever with local groups, volunteers, and educators to ensure our work creates lasting, positive impact far beyond the boundaries of our land. These relationships, human as much as ecological, remain at the heart of everything we do.

As we look ahead, 2026 promises to be one of the most exciting chapters in our story, a year where our products mature, our data deepens, our landscapes flourish, and our community of supporters grows with us. The foundations we've built put us in an exceptional position to scale our impact, elevate our offering, and continue proving that nature restoration in the UK can be ambitious, innovative, and deeply hopeful.



GILL CHAPPLE, CEO



HIGHLIGHTS: WOODLAND

1.7 MILLION TREES!

Total trees planted to date



8

Reforestation
projects completed



150,000

Total trees
planted in 2025



90,000

Saplings in the
planting pipeline



HIGHLIGHTS: NATURE

In 2025, we have completed extensive surveys to understand the health and condition of our habitats. Collecting this data is critical, as it allows us to track the success of our restoration and ecological interventions year on year, and to monitor the wildlife that call our estates 'home'.

On our site at Pleasantfield, we have recorded significant increases in our yellow rattle and meadow butter cup populations compared to our 2024 data. We have also seen the number of species per m2 increase by 10%. It is exciting to see notable records for the 'large skipper' in our butterfly surveys at Pleasantfield, which is extending its range further north to Ayrshire. Several bird species have also been sighted, including yellowhammer, whitethroat, dunnock, goldfinch, wren, blackbird and chiffchaff to name a few!

On Leadloch, we are thrilled to see increases to the numbers of snipe and lapwing spotted there. At every site we operate on, we're seeing increases in both numbers and diversity of species observed. We now have a much more detailed picture of the incredible wealth of wildlife under our care and what we need to do in the year ahead to conserve it and see it thrive.



42,505m2 of nature restoration including wildflower meadow and wetland enhancement sponsored in 2025.



Several methods of ecological surveys were utilised to assess our land in 2025, allowing us to better understand our habitats and compare their condition to last year.



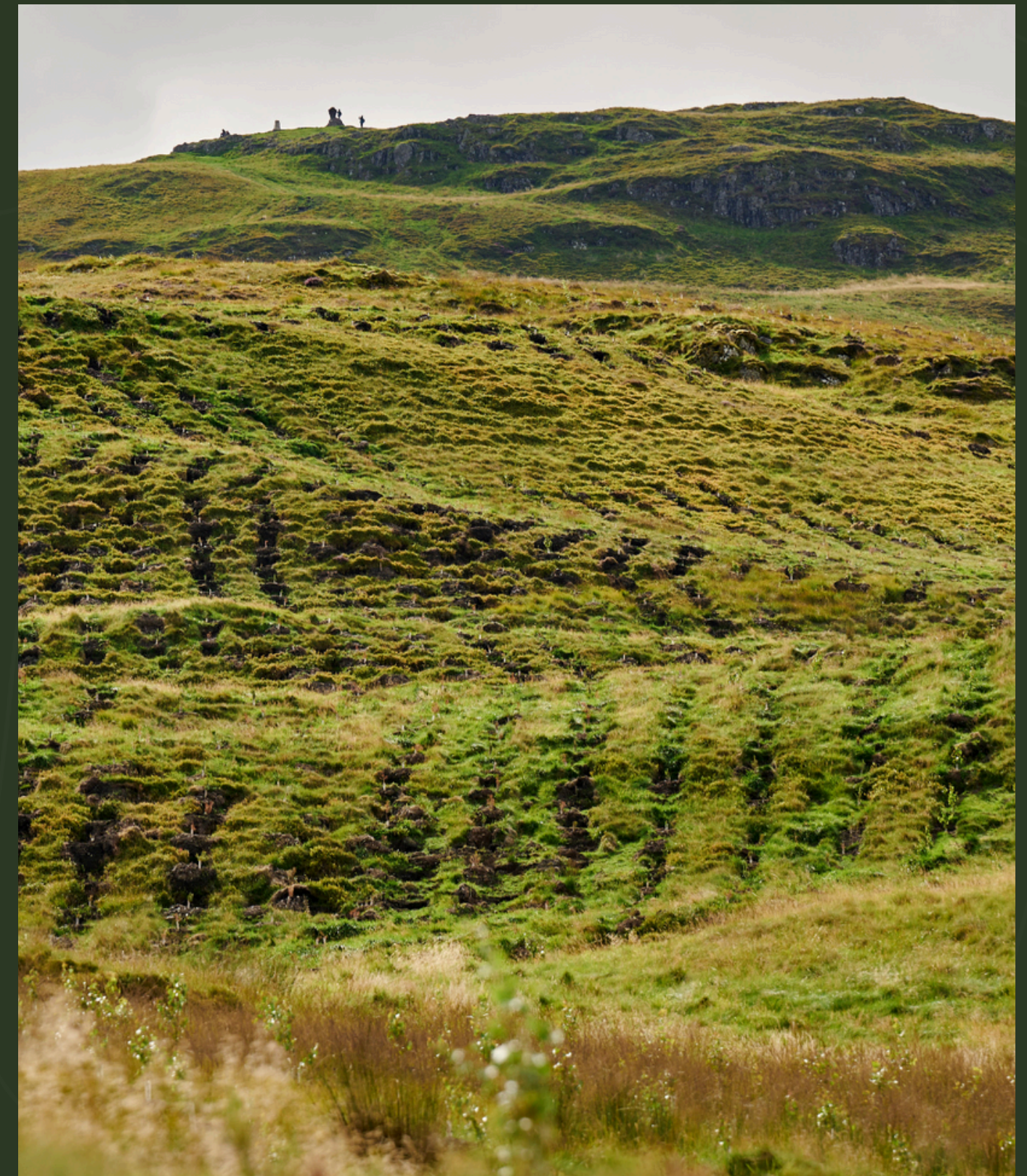
HIGHLIGHTS: PARTNERSHIPS



To all of our partners - thank you. Your commitment has helped woodlands grow, wetlands recover, and wild species return. This work is only possible because you choose to invest in nature and see beyond the short-term. Collaboration is our strength, and we're proud to be restoring the future with you.

Kate Truby, Head of Partnerships

This year we introduced a brand new digital platform, giving partners a clearer, more intuitive way to see and share the impact of their support. It brings restoration to life in real time - with mapped habitats, dynamic updates, and a smoother end-to-end experience from gifting to reporting. It's a future-ready foundation for how partners connect with nature, and a major step forward in how we scale meaningful impact together.



HIGHLIGHTS: CARBON

349,846 tonnes

due to be sequestered by our projects, including 194,405 tonnes of validated carbon and 155,441 tonnes of carbon registered and in the pipeline for validation in 2026



7

Validated projects on the carbon registry



11

Partners invested in our nature-based carbon this year



16,000

tonnes of new project PIUs are planned for 2026





2025 has been a significant year for FFC. Our woodlands are maturing and are projected to deliver 250,000+ tonnes of high quality, nature-based carbon removals over their lifetime. This year, we have focussed on building and strengthening key relationships with impactful corporates and we are proud to be a leading supplier of nature-based carbon units in the UK.

Across the sector, large leaps are being made to increase the sophistication of project monitoring, mature the legal structures and develop insurance approaches that all underpin the delivery of our projects. This sets an exciting backdrop for FFC as we continue to build on our own mission - sequestering carbon, tackling biodiversity loss, and scaling up support for nature based solutions in the UK.

Looking ahead to 2026, FFC is excited to be continuing to grow its supporter base, engaging with stakeholders across the sector, and feeding into consultations and steering groups that will shape the market in the years to come.

Rachael Kershaw, Head of Natural Capital



TREES NOT TEES

Trees Not Tees (TNT) is an initiative from FFC that aims to reduce the production of wasteful T-shirts and merchandise for events by giving participants the option to sponsor trees instead. Through partnerships, technology, and engagement with events across the UK, TNT helps restore nature whilst inspiring small actions that add up to real environmental impact.



“2025 has been an incredible year for TNT. Launching our new platform, integrating with RaceNation, and connecting with so many organisers and events across the UK has made this a year of growth and learning.

I’m a big believer in the power of collective action, and seeing participants’ choices translate into real impact has been inspiring.

I’m proud of what Trees Not Tees and our community have achieved and can’t wait to see the impact continue to grow in 2026.”

Abbie McGrath, Lead at Trees Not Tees



THE FUTURE FOREST COMPANY | 2025 ANNUAL IMPACT REPORT

43091

TREES SPONSORED

We worked with **140** fantastic events

And **67** organisers



And from avoiding unnecessary t-shirt production, we have saved an estimated*:

133,840

kgCO₂

35,880

m³ water

300,000

bottles worth of plastic

*based on data for the production of approx. 40,000 150g Virgin Polyester T-Shirts

The Woolly Pig Company

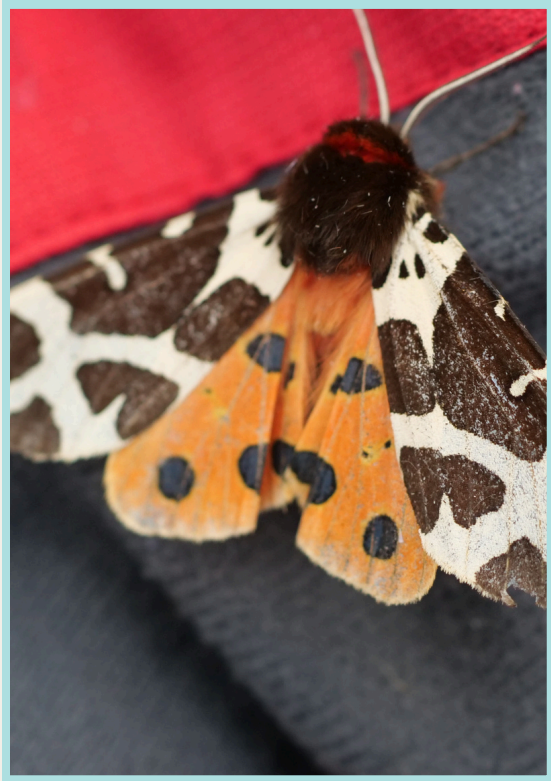
Brodoclea Farm, the home of The Woolly Pig Company, has had an exceptional year. Building on our 'best agroforestry award' in 2024, we continued to strengthen our agroforestry system while sharing our work more widely and laying foundations for future growth.

Our work gained national visibility, with features including a BBC Landward episode and the RenRegen/Propagate tour.

It has been a year of progress, recognition, and momentum — strengthening Brodoclea Farm as a leading example of regenerative livestock within a thriving agroforestry system.



COMMUNITY SPOTLIGHT: MOTH MAGIC AT DUMYAT



📷: Stuart Cathro

Restoration isn't guesswork. To understand whether our habitats are really recovering, we blend formal ecological monitoring with something just as powerful - people noticing the world around them.

Across our sites, local communities, volunteers and staff contribute thousands of tiny observations each year - a moth in a light trap, a raptor overhead, a burst of yellow rattle where last year there was only grass.

These moments, paired with structured surveys and digital monitoring, help us build a clear picture of how nature is returning.

This summer, Dumyat's meadows became a night-time research lab.

Armed with a simple light trap and a lot of curiosity, volunteers ran a series of Lepidoptera monitoring sessions - capturing, identifying and releasing nocturnal pollinators before sunrise.

What started as 'let's see what's here' quickly became one of the clearest indicators of meadow recovery:

- 76% more species recorded than in previous years
- A noticeable increase in pollinator-friendly moths such as Large Yellow Underwings and Silver-Ground Carpet

Moths are a brilliant proxy for habitat health. If the meadow works for moths, it works for bats, birds and small mammals too. The whole evening food web.



Why it matters:

These informal-but-repeatable sessions give us seasonal data, help shape grazing and cutting regimes, and bring people into the science of restoration in a way that feels tangible and joyful.



Looking ahead to 2026

As we move into 2026, our focus is firmly on scaling both the depth and breadth of our impact. We intend to:

- Deliver more woodland planting across our sites.
- Increase the sophistication of our monitoring and verification approach to ensure operational excellence - using latest remote sensing technology.
- Work with RGBE as part of the NRF Scottish Plant Recovery project - using tech combined with RGBE knowledge to recover endangered plant species.
- Work with local forestry companies - challenging our supply chain to reduce emissions and integrate a regenerative systems approach into our operations.
- Continue to build our carbon partnerships.
- Continue to grow our Trees Not Tees initiative - working across more events and with more partners to fight waste and restore nature.





Future Forest

C O M P A N Y



Thank you for taking the time to explore our 2025 Impact Report. If you'd like to learn more or discuss any aspect of this report, please reach out to us.



hello@thefutureforestcompany.com



4th Floor, Silverstream House, 45 Fitzroy Street, London, Fitzrovia W1T 6EB



thefutureforestcompany.com